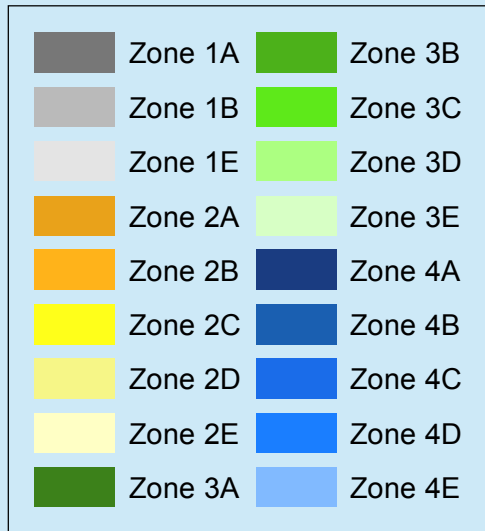


Seed Variety Selection Tool for the Hawaiian Islands

Plant Hardiness Zone Map for Kaua'i County (Kaua'i, Ni'ihau)

Find crop varieties suited for your zone at
koha.la/seedselector

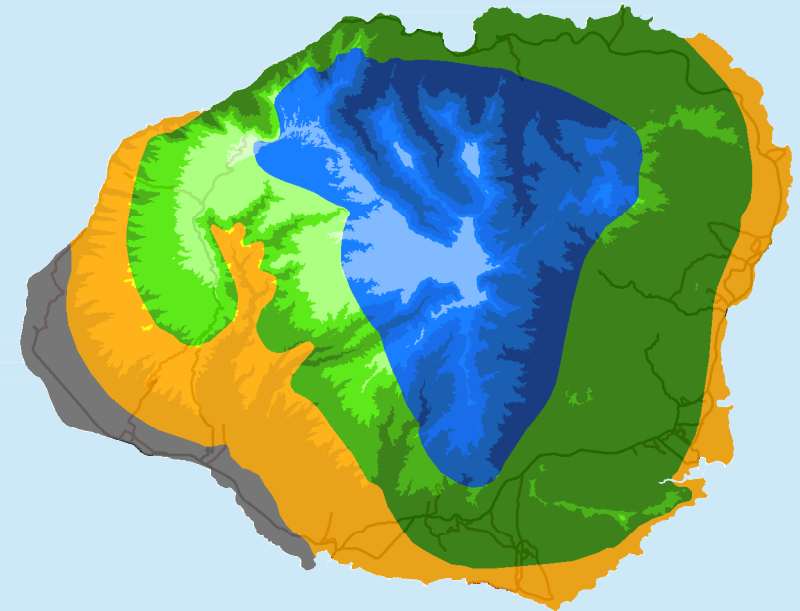


Zone 1: Arid	Zone A: Below 1000ft
Zone 2: Dry	Zone B: 1000ft - 2000ft
Zone 3: Mesic	Zone C: 2000ft - 3000ft
Zone 4: Wet	Zone D: 3000ft - 4000ft
	Zone E: Above 4000ft

NOTICE: This map is intended solely as a communication tool for farmers and gardeners to share information about the relative success of varieties in different locations with similar growing conditions and may not be appropriate for other applications.

Data Sources:

Price, J. P. 2012. Mapping plant species ranges in the Hawaiian Islands: developing a methodology and associated GIS layers.
US Department of the Interior, US Geological Survey;
Office of Planning: Hawaii Statewide GIS program



*Prepared by the
Hawai'i Public Seed Initiative,
a program of*

THE KOHALA CENTER[®]
education. environment. empowerment.

KohalaCenter.org

© 2015 The Kohala Center, Inc. All rights reserved.